

# No Dice

## Lice Treatment Spray

TECHNICAL DATA SHEET



**Kills lice and nits (lice eggs) on humans without harming the user or the environment.**

The head louse, or *Pediculus humanus capitis*, is a parasitic insect that can be found on the head, eyebrows, and eyelashes of people. Head lice feed on human blood several times a day and live close to the human scalp. They are spread by direct contact with the hair of an infested person. Infestation with head lice is most common among children. An estimated 6 million to 12 million infestations occur each year in the United States among children 3 to 11 years of age.

The diagnosis of a head lice infestation is made by inspecting and finding a live nymph, adult louse, or nit (eggs) on the scalp or hair of the person. Once they are found, treat with No Dice Lice Treatment Spray. Consult the label for treatment and removal instructions. A special Lice/Nit Comb is provided with each bottle.

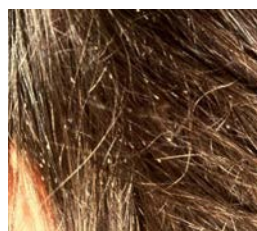
- Kills lice and nits when used according to label directions
- Includes special Lice/Nit Comb
- Non-toxic to all mammals and does not harm the environment
- Homeopathic



Adult louse



Nit or Egg



Scalp infected with nits

[www.cdc.gov](http://www.cdc.gov) - Center for Disease Control and Prevention - Parasites - Lice - Head Lice - Frequently Asked Questions



SKU: 46684

### Use In:

- |                    |                         |
|--------------------|-------------------------|
| Preschools         | Hospitals               |
| Elementary Schools | Correctional Facilities |
| Day Cares          | Community Centers       |
| Camps              | Housing Authority       |
| Nursing Homes      |                         |



Use Continental's **Defend** to kill lice on surface areas such as furniture, clothing, carpet, and more!

|  |                                |
|--|--------------------------------|
| <b>Drug Facts</b>  |                                |
| <b>Active ingredient</b><br>Lecithin 1x HPUS (1.6%).....   | <b>Purpose</b><br>Pediculicide |
| <b>Use</b> treats head lice  |                                |
| <b>Warnings • For external use only</b>  |                                |
| <b>Do not use</b> • near eyes • inside nose, mouth or vagina • on lice in eyebrows or eyelashes. See a doctor if lice are present in these areas.  |                                |
| <b>When using this product</b> • keep eyes tightly closed and protect eyes with a washcloth or towel. • if product gets in eyes, flush with water right away for 15 minutes. • do not rub eyes. • scalp itching or redness may occur. • do not ingest as may cause gastrointestinal irritation with nausea and diarrhea. • do not freeze. • do not store at a temperature greater than 140°F.  |                                |
| <b>Stop use and ask a doctor if</b> • eye irritation occurs. • skin or scalp irritation continues or infection occurs.   |                                |
| <b>Keep out of reach of children.</b> If swallowed, get medical help or contact a Poison Control Center right away.  |                                |
| <b>Directions</b>  |                                |
| • <b>Important: Read warnings before use. Adults and children 2 years and over:</b>  |                                |
| • <b>Inspect</b> • check each household member with a magnifying glass in bright light for lice/nits (eggs) • look for tiny nits near scalp, beginning at back of neck and behind ears • examine small sections of hair at a time • unlike dandruff which moves when touched, nits stick to the hair • if either lice or nits are found, treat with this product.  |                                |
| • while holding the spray bottle in one hand, back stroke your child's hair so as to expose their scalp/skin.  |                                |
| • with these areas exposed, mist the No Dice. No more than a mist is necessary.  |                                |
| • <b>Treat</b> • apply thoroughly to dry hair or other affected area. For head lice, first apply behind ears and to back of neck. • allow product to remain on head until dry. • wash area thoroughly with warm water and soap or shampoo • for head lice, towel dry hair and comb out tangles.  |                                |
| • repeat the process until you have treated your child's entire head.  |                                |
| • as you prepare to treat hair toward the front of your child's face, ask them to close their eyes and gently shield the eyes against excess mist with one hand and mist spray with the other. • allow to dry before rinsing.  |                                |
| • hold nozzle 10 to 12 inches from treated area.   |                                |
| <b>Drug Facts (continued)</b>  |                                |
| • be sure not to spray their eyes directly. When wet use nit comb.   |                                |
| • <b>Remove lice and their eggs (nits)</b> • use a finetooth or special lice/nit comb. Remove any remaining nits by hand (using a throw away glove). • hair should remain slightly damp while removing nits • if hair dries during combing, dampen slightly with spray • for head lice, after spraying the entire head, part hair into sections. Do one section at a time starting on top of head. Longer hair may take 1 to 2 hours. • lift a 1- to 2-inch wide strand of hair. Place comb as close to scalp as possible and comb with a firm, even motion away from scalp. • pin back each strand of hair after combing • clean comb often. Wipe nits away with tissue and discard in a plastic bag. Seal bag and discard to prevent lice from coming back. • after combing, thoroughly recheck for lice/nits. Repeat combing if necessary. • check daily for any lice/nits that you missed. • do not soak. Mist only. |                                |
| • a second treatment must be done in 7 to 10 days to kill any newly hatched lice.  |                                |
| • if infestation continues, see a doctor for other treatments.   |                                |
| • <b>children under 2 years:</b> ask a doctor.   |                                |
| <b>Other information</b>   |                                |
| • <b>Head lice</b> • lay small white eggs (nits) on hair shaft close to scalp • nits are most easily found on back of neck or behind ears • disinfect hats, hair ribbons, scarves, coats, towels, and bed linens by machine washing in hot water, (above 54°C (130°F)), then using hottest dryer cycle for at least 20 minutes • items that cannot be washed (bedspreads, blankets, pillows, stuffed toys, etc.) should be dry-cleaned or sealed in a plastic bag for 4 weeks, then removed outdoors and shaken out very hard before using again • soak all combs and brushes in hot water, (above 54°C (130°F)) for at least 10 minutes • vacuum all carpets, mattresses, upholstered furniture, and car seats that may have been used by affected people.  |                                |
| • <b>Storage:</b> Store at room temperature. Avoid exposure to heat, freezing and direct sunlight.   |                                |
| • <b>Disposal:</b> Place in trash or offer for recycling if available.   |                                |
| <b>Inactive ingredients</b><br>Distilled Water & Sodium Benzoate (as preservative).  |                                |
| SOLD BY:<br><b>CONTINENTAL RESEARCH CORP.</b><br>PO Box 15204, St. Louis, MO 63110<br>1-800-325-4869 • www.crcorp.com<br>24 Hour Fax: 314-776-6810   |                                |



170921

600003893




**No Dice**  
Lice Treatment Spray

- Kills lice when used according to label directions
- Non-toxic to all mammals
- Does not harm the environment
- Homeopathic

**CAUTION: KEEP OUT OF REACH OF CHILDREN. NOT FOR FOOD USE.**  
NET CONTENTS: 8 FL OZ (237 ML)



**Continental Research Corporation**

HASSLE FREE BUSINESS SINCE 1967

© 2017 Continental Research Corporation. [092917]